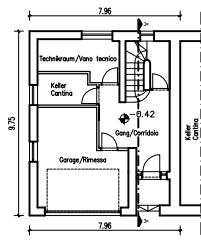


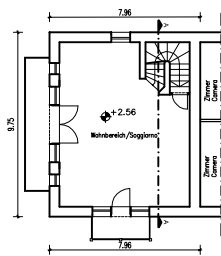
Einreichprojekt Baukonzession
 Progetto concessione edilizia

Angabe von beheizter Bruttofläche und -volumen, gesamte wärmeübertragende Umfassungsfläche
 Indicazione superficie e volume lordi riscaldati, superfici disperdenti totali

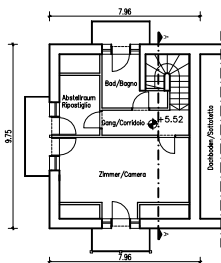
Erdgeschoss/Piano terra



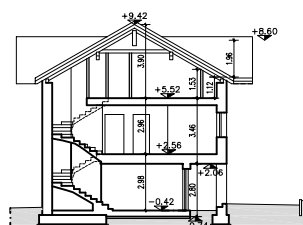
Obergeschoss/Primo piano



Dachgeschoss/Sottotetto



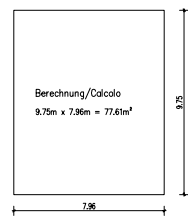
Schnitt A - A / Sezione A - A



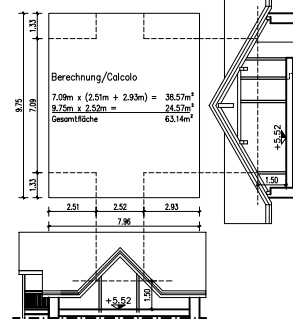
Bruttofläche/Superficie lorda
 Erdgeschoss/Piano terra



Bruttofläche/Superficie lorda
 Obergeschoss/Primo piano



Bruttofläche/Superficie lorda
 Dachgeschoss/Sottotetto

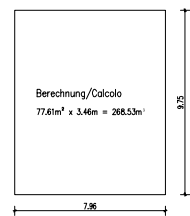


Zusammenfassung/Riassunto
 77.61m² + 61.24m² = 138.85m²

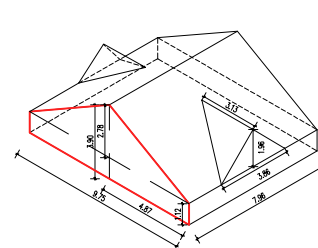
Bruttovolumen/Volume lordo
 Erdgeschoss/Piano terra



Bruttovolumen/Volume lordo
 Obergeschoss/Primo piano



Bruttovolumen/Volume lordo
 Dachgeschoss/Sottotetto



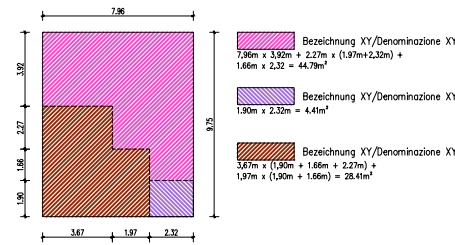
Berechnung/Calcolo
 9.75m x 1.12m + 4.61m x 2.78m = 24.46m² x 7.96m = 194.70m³
 Gaube 1+2: (3.86m x 1.96m / 2 x 3.13m / 3) x 2 = 7.89m³

Zusammenfassung/Riassunto
 268.53m³ + 194.70m³ + 7.89m³ = 471.12m³

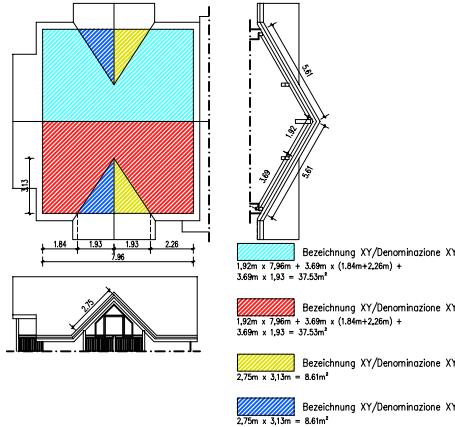
Horizontale Flächen/Superfici orizzontali
 Erdgeschoss/Piano terra



Horizontale Flächen/Superfici orizzontali
 Obergeschoss/Primo piano



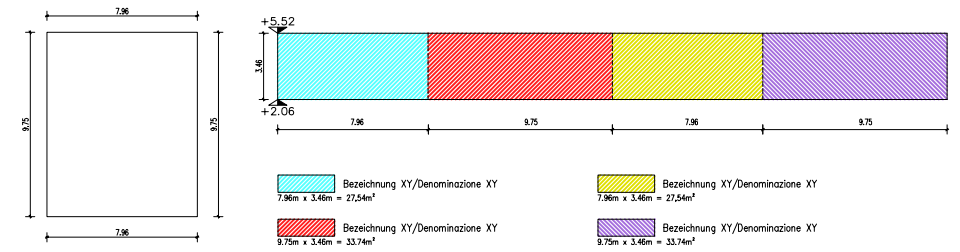
Horizontale Flächen/Superfici orizzontali
 Dachgeschoss/Sottotetto



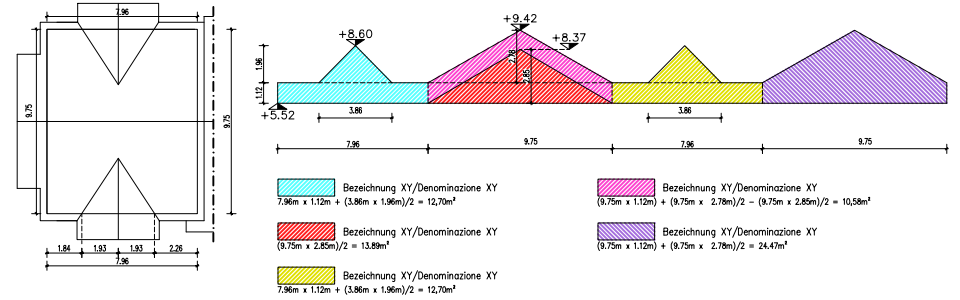
Vertikale Flächen/Superfici verticali
 Erdgeschoss/Piano terra



Vertikale Flächen/Superfici verticali
 Obergeschoss/Primo piano



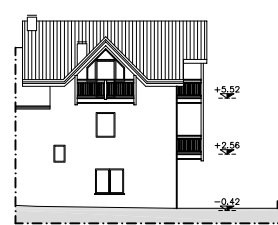
Vertikale Flächen/Superfici verticali
 Dachgeschoss/Sottotetto



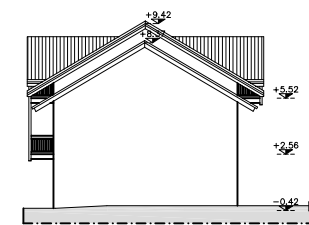
Westansicht/Prospetto ovest



Nordansicht/Prospetto nord



Ostansicht/Prospetto est



Südansicht/Prospetto sud

